

NEET PG 2024 Question Paper Shift 2

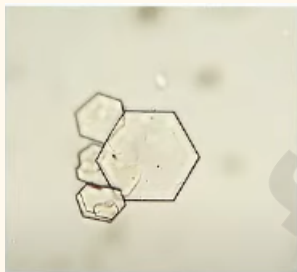
Ques 1. What is the management of the endoscopic finding given in an image ?



- a. Stenting
- b. Balloon dilatation.
- c. Fulguration
- d. Internal urethrotomy

Ans. c

Ques 2. A young patient presented with recurrent colicky abdominal pain, urine microscopy found to have crystals and RBC, what is the diagnosis ?



- a. Oxalate stone
- b. PKD
- c. Cystine stones
- d. Glomerulonephritis

Ans. c

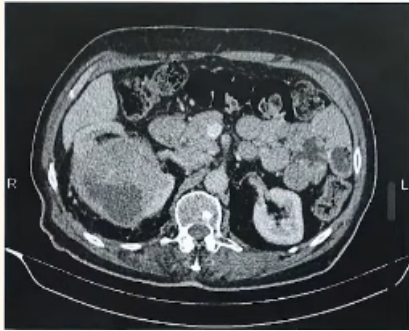
Ques 3. Identify the image given in UGIE



- a. Barrets esophagus
- b. Esophageal varices
- c. Gastric esrosion

Ans. b

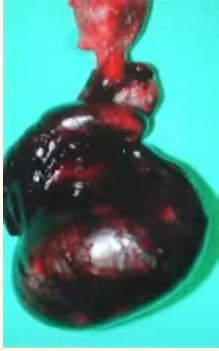
Ques 4. Identify the disease shown in the image



- a. PKD
- b. Renal cyst
- c. Medullary sponge kidney
- d. PUJ obstruction

Ans. b

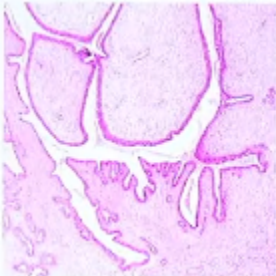
Ques 5. Q. A 12 years old child presented with sudden severe onset of scrotal najn after an history of trauma 6 hours before. Intra operative image is given what is the likely diagnosis?



- a. Torsion testis with gangrene
- b. Testicular hematoma
- c. Torsion testis
- d. Gangrene of testis

Ans. a

Ques 6. Q. A 40 years old female with lump in breast measuring 5 X 6 cm with HPE given in the image, what is the likely diagnosis ?



- a. Phyllodes tumour
- b. Fibroadenoma
- c. Breast carcinoma

Ans. a

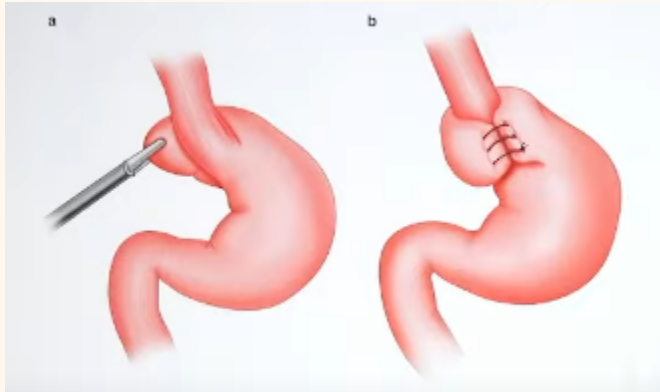
Ques 7. What is the negative pressure in VAC dressing

- a. 60-90 mmHg
- b. 90-100 mmHg
- c. 120-130 mmHg

d. 130-150 mmHg

Ans. c

Ques 8. . Identify the surgery shown in the image



a. Nissens fundoplication

b. Dor

Ans. a

Ques 9. Identify the structure marked in the intra operative image of congenital inguinal hernia ?

a. Femoral vein

b. Obturator vein

c. Testicular vein

d. Inferior epigastric vein

Ans. c

Ques 10. What biopsy would you take from the lesion shown

a. Excisional

b. Incisional

c. Edge

Ans. c

Ques 11. How does skin graft derives its nutrition on day 3

- a. Plasma imbibition**
- b. Inosculation**
- c. Neovascularization**
- d. None**

Ans. b

Ques 12. Identify the ulcer



- a. Arterial**
- b. Venous**
- c. Trophic**
- d. Diabetic foot ulcer**

Ans. b

Ques 13. A 30 years old female presented with the swelling in neck, what is the next step in evaluation ?



- a. 1131
- b. FNAC
- c. TSII & T4
- d. FSH

Ans. c

Ques 14. Identify the drain in the image



- a. ROMOVAC
- b. JACKSON PRATT
- c. CORRUGATE
- d. PENROSE

Ans. a

Ques 15. A 5-year-old girl was washing her doll with shampoo containing a chemical Rotenone. Her mother notice her in unconscious state. Which of the following Complex is inhibited by the above-mentioned chemical?

- A. NADH Dehydrogenase**
- B. Succinate DH**
- C. Cytochrome C**
- D. Cytochrome oxidase**

Ans. A

Ques 16. A patient present with dilated cardiomyopathy on x ray and hypoglycemia, floppy baby, hypotonia, hepatomegaly. What is most likely diagnosis?

- A. Pompe's disease**
- B. Von Gierke's disease**
- C. Ebstein anomaly**

Ans. A

Ques 17. A 15-year-old child with difficulty in exercise, affected oxidation of long chain fatty acids and biopsy muscle shows fat vacuoles. Which of the following is the diagnosis?

- A. Carnitine deficiency**
- B. FA synthase defect**
- C. LPL defect**
- D. LDL defect**

Ans. A

Ques 18. A Farmer was on maize as staple diet develops rash on face, neck and hand. Which of the following vitamin should be given in the treatment?

- A. Niacin
- B. Thiamine

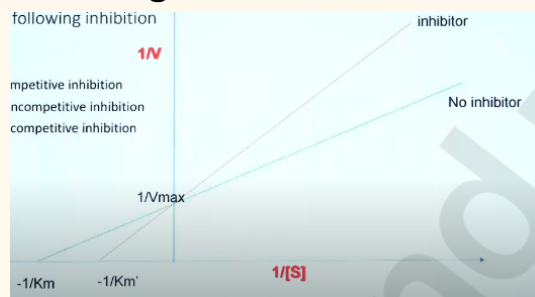
Ans. A

Ques 19. A patient develops mouth ulcers on treatment with Methotrexate. Which of the following will decrease with this drug?

- A. UMP
- B. TMP
- C. CMP

Ans. B

Ques 20. Increased K_m and unchanged V_{max} is seen in which of the following inhibition



- A. Competitive inhibition
- B. Noncompetitive inhibition
- C. Uncompetitive inhibition

Ans. A

Ques 21. A drug is given for the treatment of hyperlipidemia. Facial flushing was noted. Which of the following drug causes this side effect?

Ans. Nicotinic acid

Ques 22. Increased chylomicron, lipemic serum is seen in.

Ans. Lipoprotein lipase deficiency

Ques 23. Which micronutrient deficiency causes anemia, gum bleeding and x ray changes - White frankel line?

- A. Copper**
- B. Iron**
- C. Zinc**

Ans. B

Ques 24. Which of the following enzyme is deficient in patient with Phenylketonuria if phenylalanine hydroxylase level is normal

Ans. Dihydrobiopterine reductase

Ques 25. A tall stature, long digits, long arm span and subluxation of lens is seen in which of the following defect

- A. Fibrillin 1**
- B. Collagen**

Ans. A

Ques 26. A male patient with pallor, weakness and easy fatigability. His blood report shows MCV 53, TIBC- Increased. What is your diagnosis?

Ans. Iron deficiency anemia

Ques 27. Which of the following is methanol poisoning derivatives?

- A. Formic acid+ Lactic acid**
- B. Acetic acid**

Ans. A

